

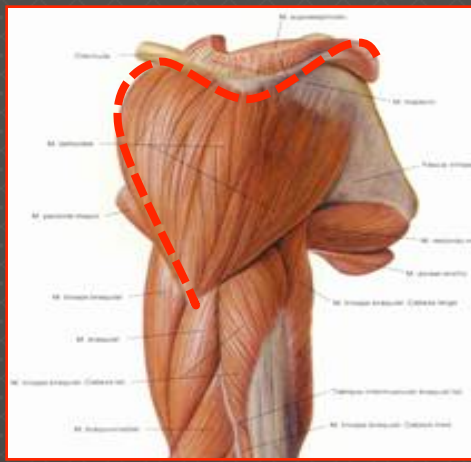
# DELTOIDECTOMÍA TUMORAL RADICAL

M. López Vega, P. Rey Vidal, J. L. Rodrigo, D. Montaner Alonso

## CIRUGÍA TUMORAL EN EL HOMBRO:

- 5-26 % tumores en el hombro afectan a tejidos blandos
- 33% sarcomas se localizan en MMSS (15% en hombro)

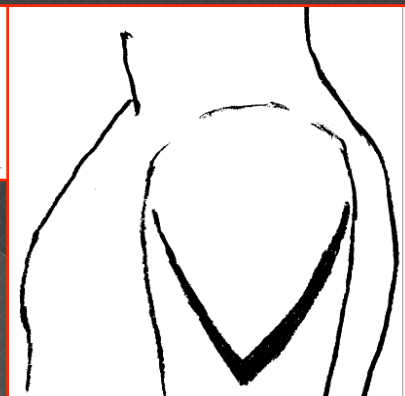
### Abordaje deltopectoral



Hindawi Publishing Corporation  
Sarcoma  
Volume 2016, Article ID 490634, 4 pages  
doi:10.1155/2016/490634

Research Article  
**A Novel Surgical Approach to Lipomatous Tumours of the Deltoid Region**

Emad Al Absi, Tamanna Karim, Nigel Colterjohn, and Michelle Ghert  
Department of Surgery, McMaster University and Hamilton Health Sciences, Juravinski Cancer Center, Hamilton, Ontario, Canada E7V 5G2



J Shoulder Elbow Surg Volume 12, Number 5  
**Subdeltoid approach for removal of large soft-tissue lesions beneath the deltoid muscle: Report of two cases**

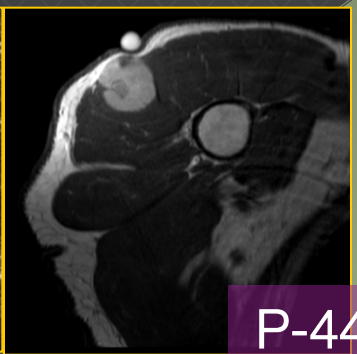
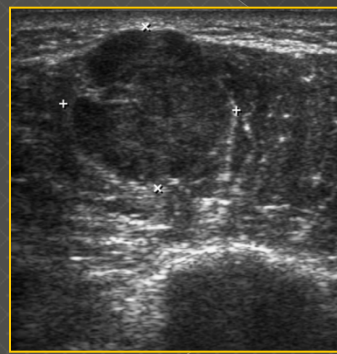
Kazuya Tamai, MD, PhD, Denji Osada, MD, PhD, Kazuhito Mori, MD, PhD, Kaeiko Takizawa, MD, Junichiro Hamada, MD, PhD, and Kotchi Saotome, MD, PhD, Toshiyuki, Japan

### Abordaje en “S” (Cubbins, Callaghan, Escudero)

### Abordaje subdeltoideo en “V” (Martini)

## CASO CLÍNICO:

- Varón, 55 años. Tumoración en deltoides derecho
- Masa hipoecogénica, sólida, bien delimitada, intensa captación homogénea de contraste: malignidad
- Histología: **SARCOMA DE CÉLULAS CLARAS**
- Estadio IIA: resección completa compartimento deltoideo

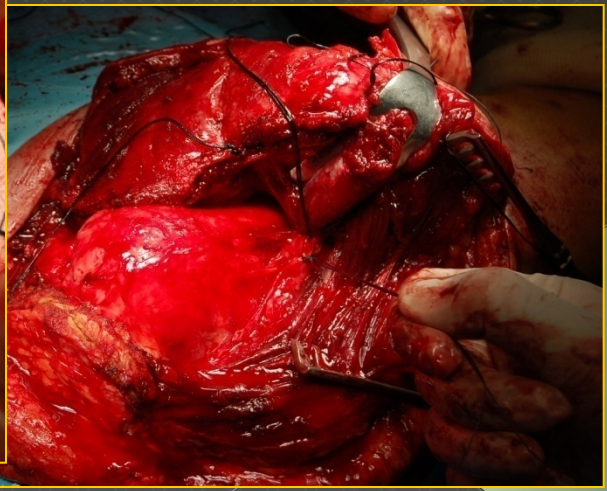
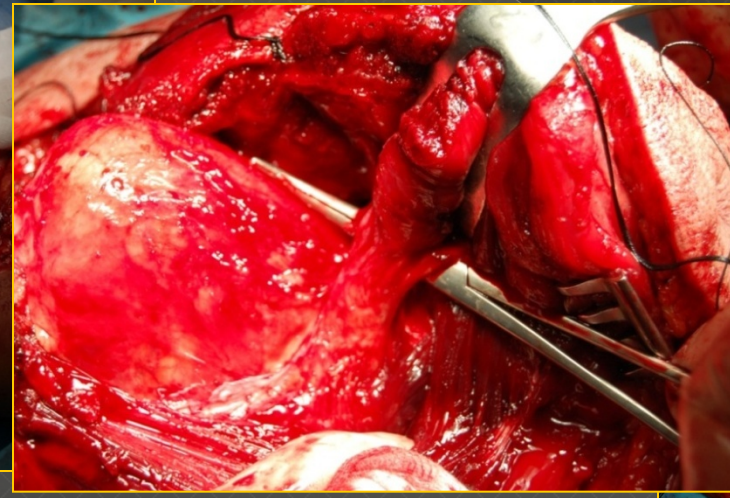
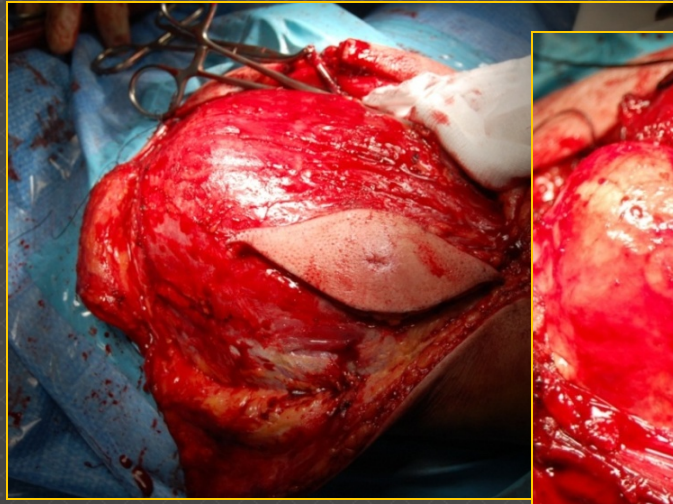


# DELTOIDECTOMÍA TUMORAL RADICAL

M. López Vega, P. Rey Vidal, J. L. Rodrigo, D. Montaner Alonso

## DELTOIDECTOMÍA RADICAL: ABORDAJE QUIRÚRGICO EN “Y”

- Diseño del abordaje en “Y” siguiendo las inserciones clavicular, escapular y humeral del deltoide, incluyendo una isla cutánea de la biopsia previa



- Disección y ligadura del paquete vasculo-nervioso axilar
- Resección en bloque del compartimento deltoideo

# DELTOIDECTOMÍA TUMORAL RADICAL

M. López Vega, P. Rey Vidal, J. L. Rodrigo, D. Montaner Alonso



- Con un manguito competente, la resección del deltoides mantiene una movilidad y un resultado funcional excelente
- Pareja de fuerzas abductoras sinérgicas:  
**DELTOIDES – MANGUITO ROTADORES**

(Inman and Abbott)

*J Shoulder Elbow Surg*  
Volume 16, Number 2

**Shoulder function after extensive total deltoid excision for treatment of soft-tissue sarcoma: A case report**

Toshihisa Osonoi, MD, PhD, Takashi Tsuchiya, MD, PhD, Nariyuki Mura, MD, PhD, and Toshihiko Ogino, MD, PhD Yamagata, Japan

Khruengkarnchana, Suzuki, and Fukuda *J Shoulder Elbow Surg* (2004)

**Shoulder function after subtotal excision of the deltoid muscle and of the deltoid and infraspinatus muscles in extra-abdominal desmoid tumor: A long-term follow-up in two cases**

Paitoj Khruengkarnchana, MD, Kanae Suzuki, MD, PhD, and Hiroaki Fukuda, MD, PhD, Isehara, Sagami-hara, and Hiratsuka, Japan

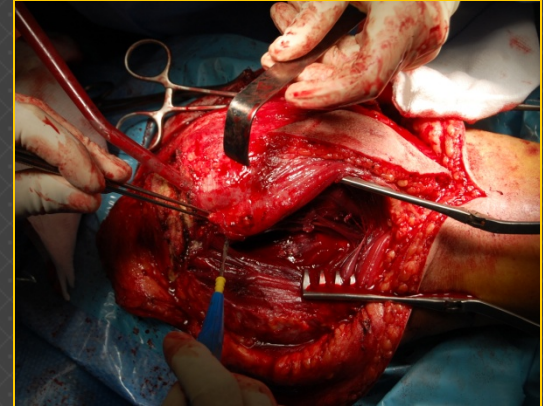
	1er mes
Antepulsión	125°
Retropulsión	30°
Abducción	160°
Rotación externa	90°
Rotación interna	70°

# DELTOIDECTOMÍA TUMORAL RADICAL

M. López Vega, P. Rey Vidal, J. L. Rodrigo, D. Montaner Alonso

## CONCLUSIONES

- La resección radical del compartimento deltoideo preserva una **buena situación funcional**, en ausencia de lesiones del manguito de los rotadores
- El abordaje en “Y” supone una opción **fácil y segura**, proporcionando un **amplio campo quirúrgico**
- Este abordaje permite una resección completa del compartimento deltoideo **sin visualizar directamente la masa tumoral**, disminuyendo el riesgo de diseminación y/o recidiva local del tumor



# DELTOIDECTOMÍA TUMORAL RADICAL

M. López Vega, P. Rey Vidal, J. L. Rodrigo, D. Montaner Alonso

- János Kiss, MD, Gergely Sztrinkai, MD, Imre Antal, MD. **Functional results and quality of life after shoulder girdle resections in musculoskeletal tumors.** *J Shoulder Elbow Surg.* 2007;16:273-279
- Gordon I. Groh, MD, Michael Simoni, MD, Paolo Rolla, MD, and Charles A Rockwood. **Loss of the deltoid after shoulder operations: An operative disaster.** *J Shoulder Elbow Surg.* 1994;3:243-53
- Martin Malawer and James C. Wittig. **Overview of Resections around the Shoulder Girdle: Anatomy, Surgical Considerations and Classification.** *Musculoskeletal Cancer Surg.* 2009; 9: 179-202
- Judy E. Garber, MD, st Marcia K. Liepman, MD, Ellen J. Gelles, BA. **Melanoma and Soft Tissue Sarcoma in Seven Patients.** *Cancer.* 1990; 66: 2432-2434
- Simon H Palmer , Alistair C Ross. **Recovery of shoulder movement in patients with complete axillary nerve palsy.** *Ann R Coll Surg Engl.* 1998; 80: 413-415
- Phadke V, Camargo PR, Ludewig PM. **Scapular and rotator cuff muscle activity during arm elevation: A review of normal function and alterations with shoulder impingement.** *Rev Bras Fisioter.* 2009;13(1):1-9
- Gtiran Markhede, Josh Monastyrski, Befill Stener. **Shoulder function after deltoid muscle removal.** *Acta Orthop Scand.* 1985; 56: 242-244
- Toshihisa Osanai, MD, PhD, Takashi Tsuchiya, MD, PhD, Nariyuki Mura, MD. **Shoulder function after extensive total deltoid excision for treatment of soft-tissue sarcoma: A case report.** *J Shoulder Elbow Surg ..* 2007; 16: 9-12
- Emad Al Absi, Tamanna Karim, Nigel Colterjohn. **A Novel Surgical Approach to Lipomatous Tumours of the Deltoid Region.** Hindawi Publishing Corporation. 2010, ID 495834
- O. Hocar, A. Le Cesne, S. Berissi. **Clear Cell Sarcoma (MalignantMelanoma) of Soft Parts: A Clinicopathologic Study of 52 Cases.** Hindawi Publishing Corporation. 2012, ID 984096
- Pairoj Khruengkarnchana, MD,a Kanae Suzuki, MD, PhD,b and Hiroaki Fukuda, MD. **Shoulder function after subtotal excision of the deltoid muscle and of the deltoid and infraspinatus muscles.** *J Shoulder Elbow Surg.* 2004; 13: 119-22
- Kazuya Tamai, MD, PhD, Denju Osada, MD, PhD, Kazuhiro Mori, MD, PhD. **Subdeltoid approach for removal of large soft-tissue lesions beneath the deltoid muscle: Report of two cases.** *J Shoulder Elbow Surg .* 2003; 12: 520-3
- Edmond Cleeman, MD, Joshua D. Auerbach, MD, Dempsey S. Springfield, MD. **Tumors of the shoulder girdle: A review of 194 cases.** *J Shoulder Elbow Surg .*2005; 14: 460-465